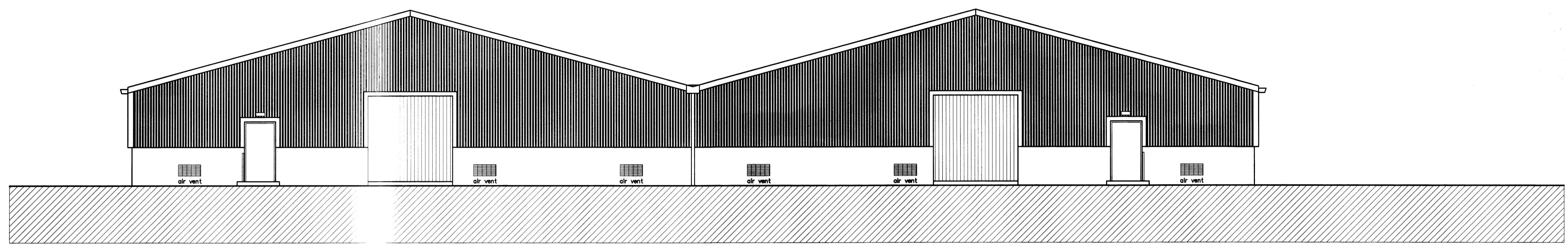


1 2 3 4 5 6 7 8

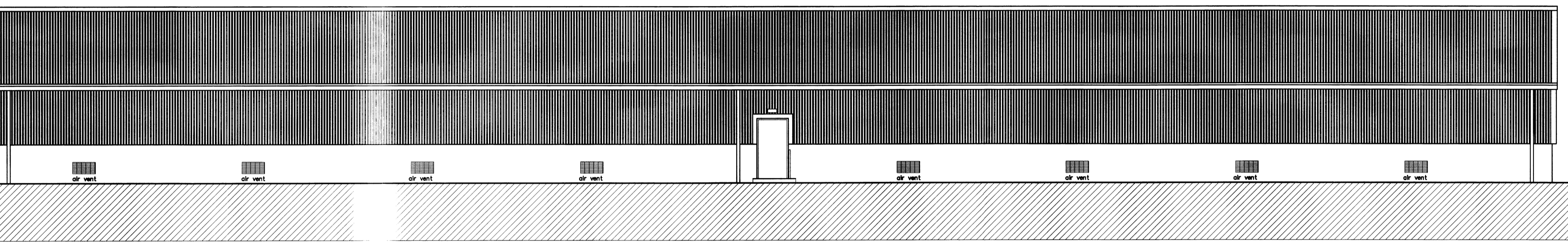
Rev	Revision note	Date	Signature	Checked
A-	Preliminary issue	15/10/09		
B-	Planning drawing	27/10/09		

A



NORTH WEST ELEVATION

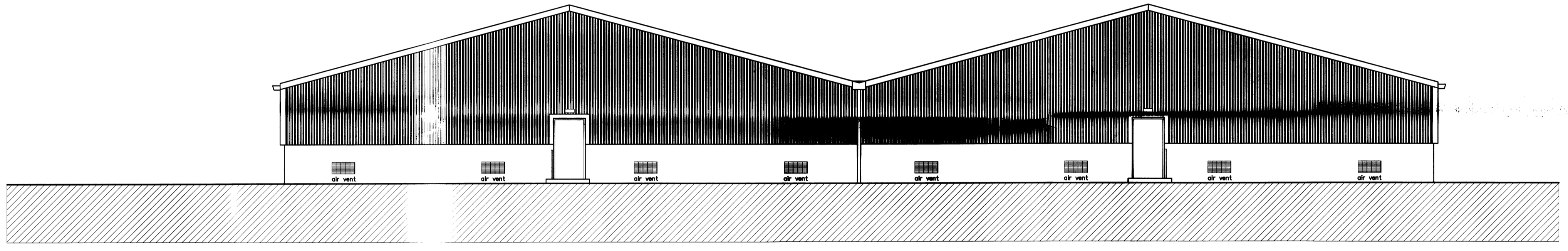
B



SOUTH WEST ELEVATION

C

D

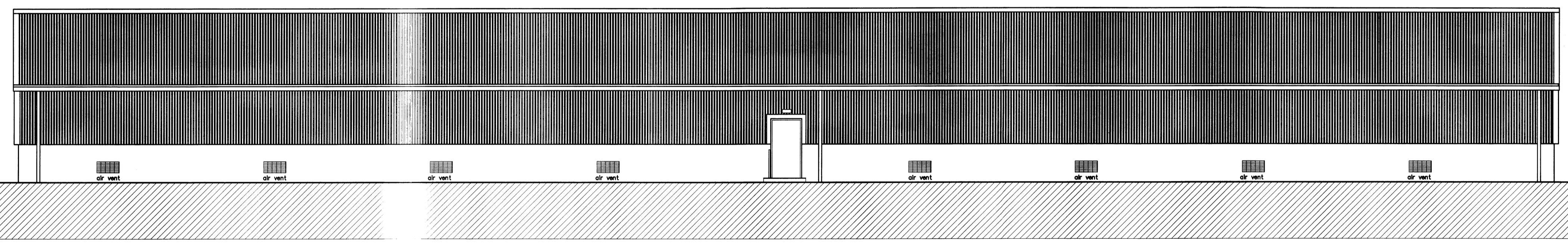


SOUTH EAST ELEVATION

E

Roof- Profilled steel roof covering- colour TBC
 Walls-(lower) Concrete blockwork to a height of 1.20m with smooth cement render, colour- grey.
 Walls-(upper) Profilled steel sheeting- colour TBC
 Rainwater goods- Galv steel gutters & down pipe.
 Doors- Timber sliding doors- colour dark brown

F



NORTH EAST ELEVATION

G

THIS DRAWING IS COPYRIGHT AND MUST NOT BE AMENDED OR COPIED IN WHOLE OR PART WITHOUT THE WRITTEN CONSENT OF STEWART CONSULTING.

Client	Kichoman Distillery			
Project	Proposed Bonded Store, Conisby, Bruichladdich, Isle of Islay			
Drawing	Elevations			
Date	October 2009	Scale	1:100	Rev
Drawn by	amcd.	Drawing number	1768-03	B

H

